



Contact Precautions



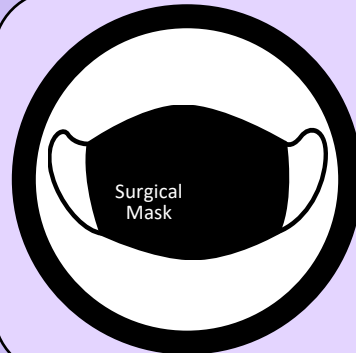
In addition to Standard Precautions



Hand Hygiene when Entering and Leaving the Room

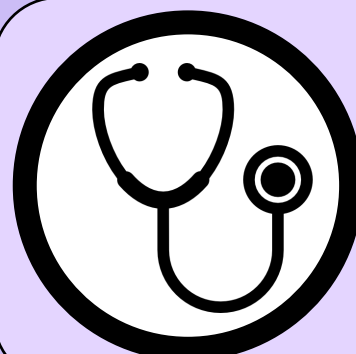


Gown and Glove Prior to Entering the Room



Standard Precautions

Wear mask and/or eye protection [face shield or goggles] when there is potential for splashes or sprays of respiratory or other secretions.



Use Disposable or Resident Dedicated Equipment

Thoroughly Clean and Disinfect any Shared Equipment

