



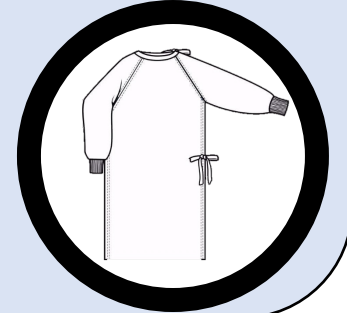
Enhanced Contact-Droplet Precautions



**Hand Hygiene when Entering
and Leaving the Room**



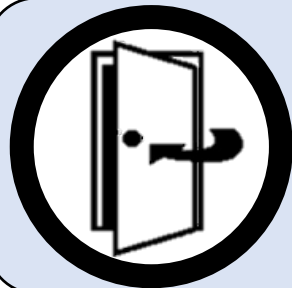
Wear Eye Protection
(Face Shield or Goggles)



**Gown and Glove Prior to
Entering the Room**



**Prior to Entering the Room, a Fit Tested
N-95 Respirator Must be Worn**
(Instead of a Surgical Face Mask)



Keep the Door CLOSED
(If it Can be Safely Done)



**Use Disposable or Resident Dedicated
Equipment**

**Thoroughly Clean and Disinfect Any
Shared Equipment**

